

|         |         |     |   |
|---------|---------|-----|---|
| DRAWING | 2304587 | REV | 0 |
|---------|---------|-----|---|

|     |            |                |
|-----|------------|----------------|
|     |            | DRWN:          |
|     |            | CHKD:          |
|     |            | DRWN:          |
|     |            | CHKD:          |
|     |            | DRWN:          |
|     |            | CHKD:          |
|     |            | DRWN:          |
|     |            | CHKD:          |
| 0   | 2000-08-10 | DRWN: B.SEKHON |
|     |            | CHKD:          |
| REV | DATE       | NAME           |

NOTE:  
CERTAIN COMPONENTS ARE NOT SHOWN  
IN ALL VIEWS FOR CLARITY  
  
ITEMS 3, 4, 5, 6, ARE FOR SHIPPING  
ONLY REMOVE BEFORE STARTING THE  
MACHINE

|                               |   |      |
|-------------------------------|---|------|
| WEIGHT                        |   | . kg |
| TORQUE TO HUSKY SPECIFICATION |   |      |
| UNLESS OTHERWISE SPECIFIED    | FASTENERS: HGT-50<br>FITTINGS: HGT-FT<br>SET SCREWS: HGT-SS |      |

|   |     |  |         |   |  |
|---|-----|--|---------|---|--|
| METRIC  |     |  |         | INJECTION MOLDING SYSTEMS LTD   |  |
| THIS DRAWING IS THE PROPERTY OF HUSKY INJECTION MOLDING SYSTEMS LTD. ("HUSKY"). |     | THE INFORMATION CONTAINED IN THIS DRAWING IS CONFIDENTIAL. |         | THIS DRAWING AND THE INFORMATION CONTAINED IN THIS DRAWING MAY NOT BE COPIED OR USED, IN WHOLE OR IN PART, WITHOUT THE PRIOR WRITTEN PERMISSION OF HUSKY. |  |
| COPYRIGHT-HUSKY INJECTION MOLDING SYSTEMS LTD. ALL RIGHTS RESERVED              |     | TITLE  |         | INJECTION BASE ASSEMBLY<br>G-PET P2 AND INDEX   |  |
| SCALE   | NTS | SIZE   | DRAWING | REV   |  |
| SHEET 1 OF 5  |     | A3   | 2304587 | 0   |  |

1

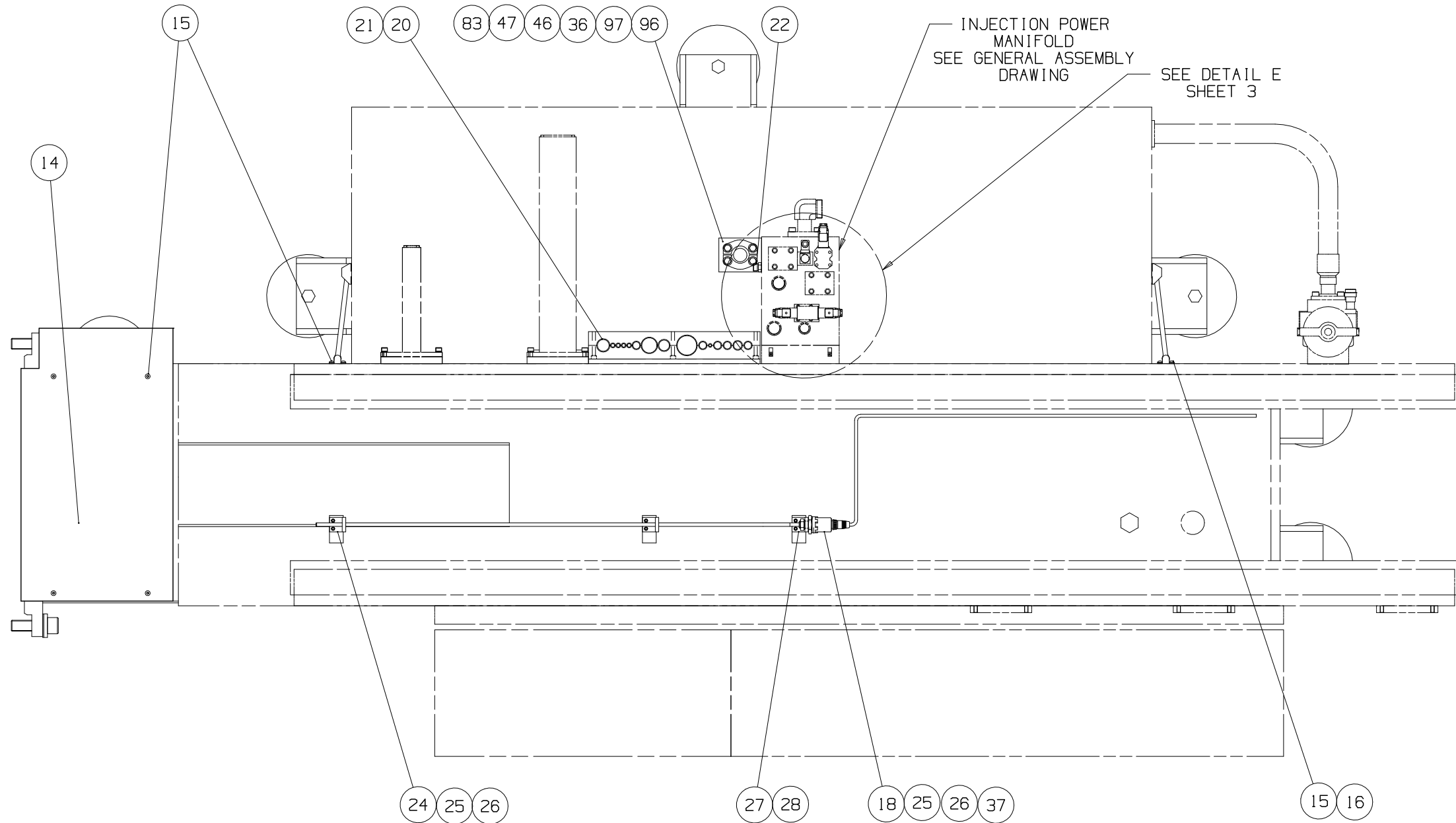
2

A

A

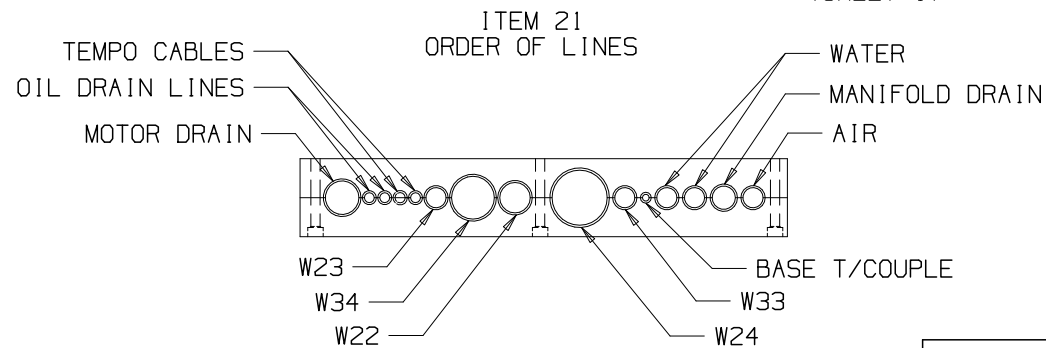
B

B



|         |         |
|---------|---------|
| REV     | 0       |
| DRAWING | 2304587 |

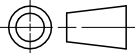
VIEW C  
(SHEET 1)



VIEW Y  
(SHEET 4)

|     |            |                |
|-----|------------|----------------|
|     |            | DRWN:          |
|     |            | CHKD:          |
|     |            | DRWN:          |
|     |            | CHKD:          |
|     |            | DRWN:          |
|     |            | CHKD:          |
|     |            | DRWN:          |
|     |            | CHKD:          |
| 0   | 2000-08-10 | DRWN: B.SEKHON |
|     |            | CHKD:          |
| REV | DATE       | NAME           |

|                               |   |
|-------------------------------|---|
| WEIGHT                        | . kg  |
| TORQUE TO HUSKY SPECIFICATION |   |
| UNLESS OTHERWISE SPECIFIED    | FASTENERS: HGT-50<br>FITTINGS: HGT-FT<br>SET SCREWS: HGT-SS |

|   |  |   |      |                               |     |
|---|--|---|------|-------------------------------|-----|
| METRIC   |  | <h1>HUSKY</h1>                                |      | INJECTION MOLDING SYSTEMS LTD |     |
| <p>THIS DRAWING IS THE PROPERTY OF HUSKY INJECTION MOLDING SYSTEMS LTD. ("HUSKY").</p> <p>THE INFORMATION CONTAINED IN THIS DRAWING IS CONFIDENTIAL.</p> <p>THIS DRAWING AND THE INFORMATION CONTAINED IN THIS DRAWING MAY NOT BE COPIED OR USED, IN WHOLE OR IN PART, WITHOUT THE PRIOR WRITTEN PERMISSION OF HUSKY.</p> <p>COPYRIGHT-HUSKY INJECTION MOLDING SYSTEMS LTD. ALL RIGHTS RESERVED</p> |  | TITLE   |      |                               |     |
|   |  | INJECTION BASE ASSEMBLY<br>G-PET P2 AND INDEX |      |                               |     |
| SCALE   |  | NTS   | SIZE | DRAWING                       | REV |
| SHEET   |  | 2 OF 5  | A3   | 2304587                       | 0   |

1

2

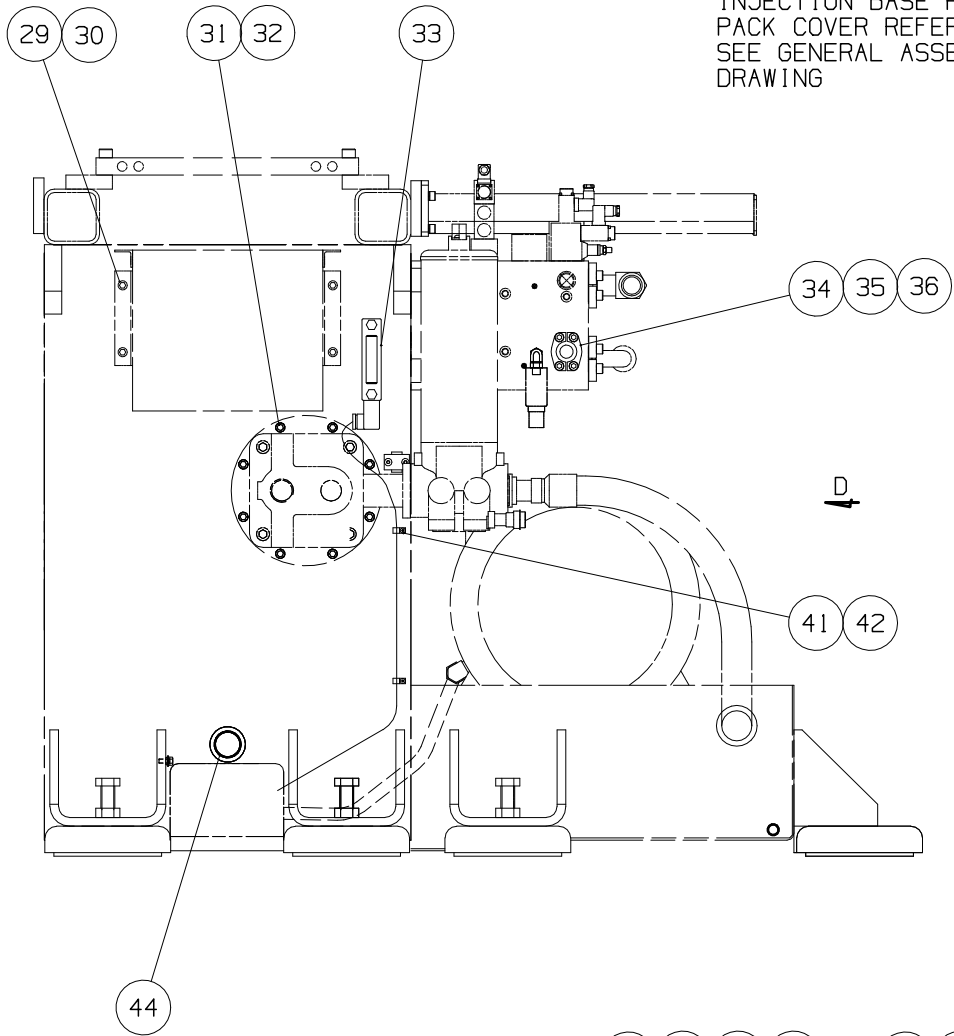
1

2

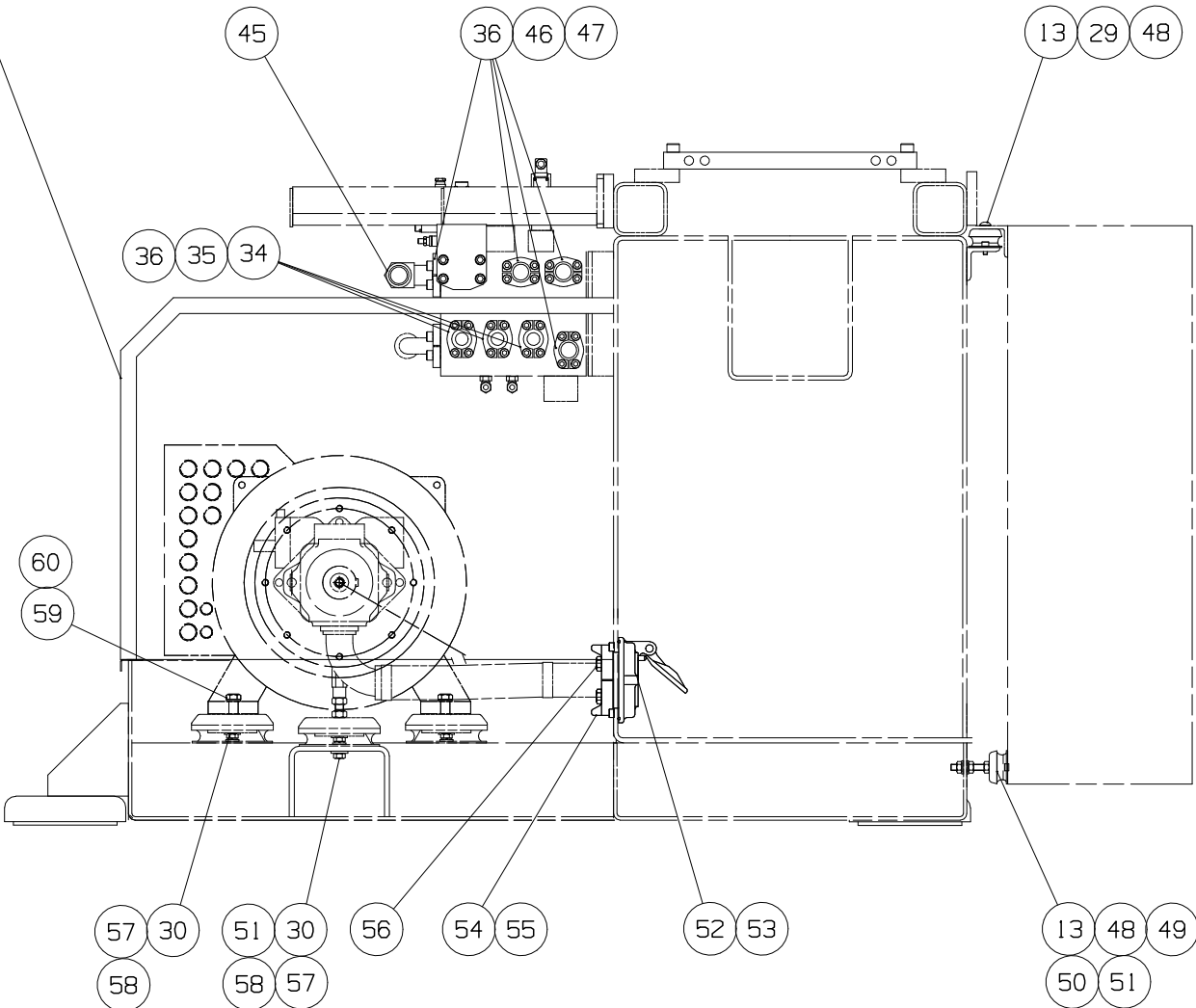
REV 0

DRAWING 2304587

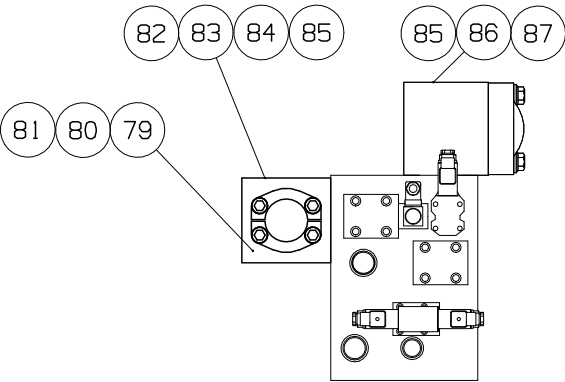
INJECTION BASE POWER  
PACK COVER REFERENCE  
SEE GENERAL ASSEMBLY  
DRAWING



VIEW B  
(SHEET 1)



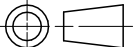
SECTION A-A  
(SHEET 1)



DETAIL E  
E140 HIGH SPEED  
MACHINES ONLY

|     |            |                |
|-----|------------|----------------|
|     |            | DRWN:          |
|     |            | CHKD:          |
|     |            | DRWN:          |
|     |            | CHKD:          |
|     |            | DRWN:          |
|     |            | CHKD:          |
|     |            | DRWN:          |
|     |            | CHKD:          |
| 0   | 2000-08-10 | DRWN: B.SEKHON |
|     |            | CHKD:          |
| REV | DATE       | NAME           |

|                               |                    |      |
|-------------------------------|--------------------|------|
| WEIGHT                        |                    | . kg |
| TORQUE TO HUSKY SPECIFICATION |                    |      |
| UNLESS OTHERWISE SPECIFIED    | FASTENERS: HGT-50  |      |
|                               | FITTINGS: HGT-FT   |      |
|                               | SET SCREWS: HGT-SS |      |

|  |  |   |  |   |  |                               |  |     |  |
|--|--|---|--|---|--|-------------------------------|--|-----|--|
| METRIC   |  |  |  | <i>HUSKY</i>                                  |  | INJECTION MOLDING SYSTEMS LTD |  |     |  |
| THIS DRAWING IS THE PROPERTY OF HUSKY INJECTION MOLDING SYSTEMS LTD. ("HUSKY").<br><br>THE INFORMATION CONTAINED IN THIS DRAWING IS CONFIDENTIAL.<br><br>THIS DRAWING AND THE INFORMATION CONTAINED IN THIS DRAWING MAY NOT BE COPIED OR USED, IN WHOLE OR IN PART, WITHOUT THE PRIOR WRITTEN PERMISSION OF HUSKY. |  |   |  | TITLE   |  |                               |  |     |  |
|  |  |   |  | INJECTION BASE ASSEMBLY<br>G-PET P2 AND INDEX |  |                               |  |     |  |
| SCALE  |  | NTS   |  | SIZE  |  | DRAWING                       |  | REV |  |
| SHEET  |  | 3 OF 5  |  | A3  |  | 2304587                       |  | 0   |  |
| COPYRIGHT-HUSKY INJECTION MOLDING SYSTEMS LTD. ALL RIGHTS RESERVED   |  |   |  |   |  |                               |  |     |  |

1

2

1

2

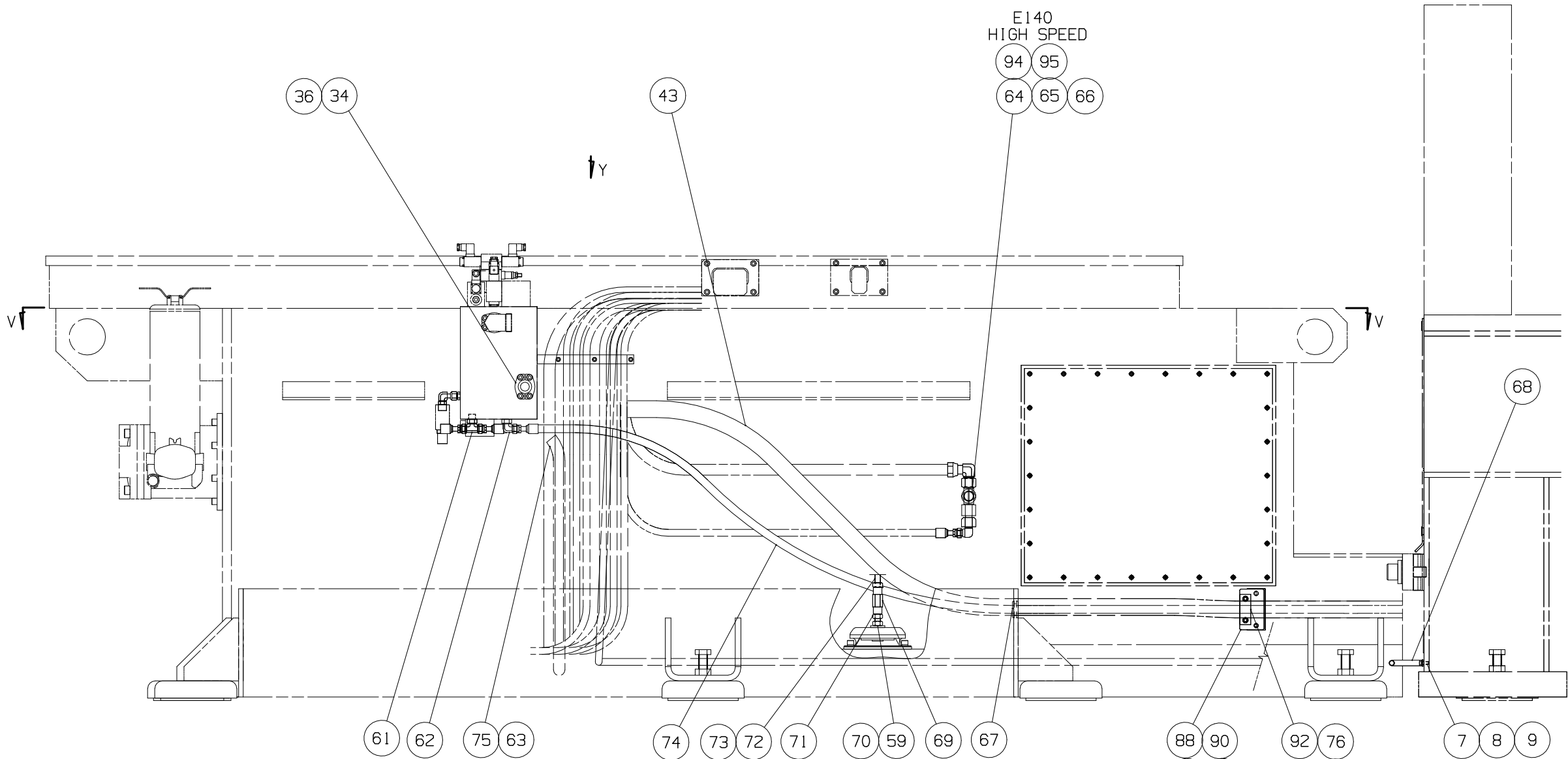
DRAWING 2304587  
REV 0

A

A

B

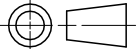
B



VIEW D  
(SHEET 3)

|     |            |                |
|-----|------------|----------------|
|     |            | DRWN:          |
|     |            | CHKD:          |
|     |            | DRWN:          |
|     |            | CHKD:          |
|     |            | DRWN:          |
|     |            | CHKD:          |
|     |            | DRWN:          |
|     |            | CHKD:          |
| 0   | 2000-08-10 | DRWN: B.SEKHON |
|     |            | CHKD:          |
| REV | DATE       | NAME           |

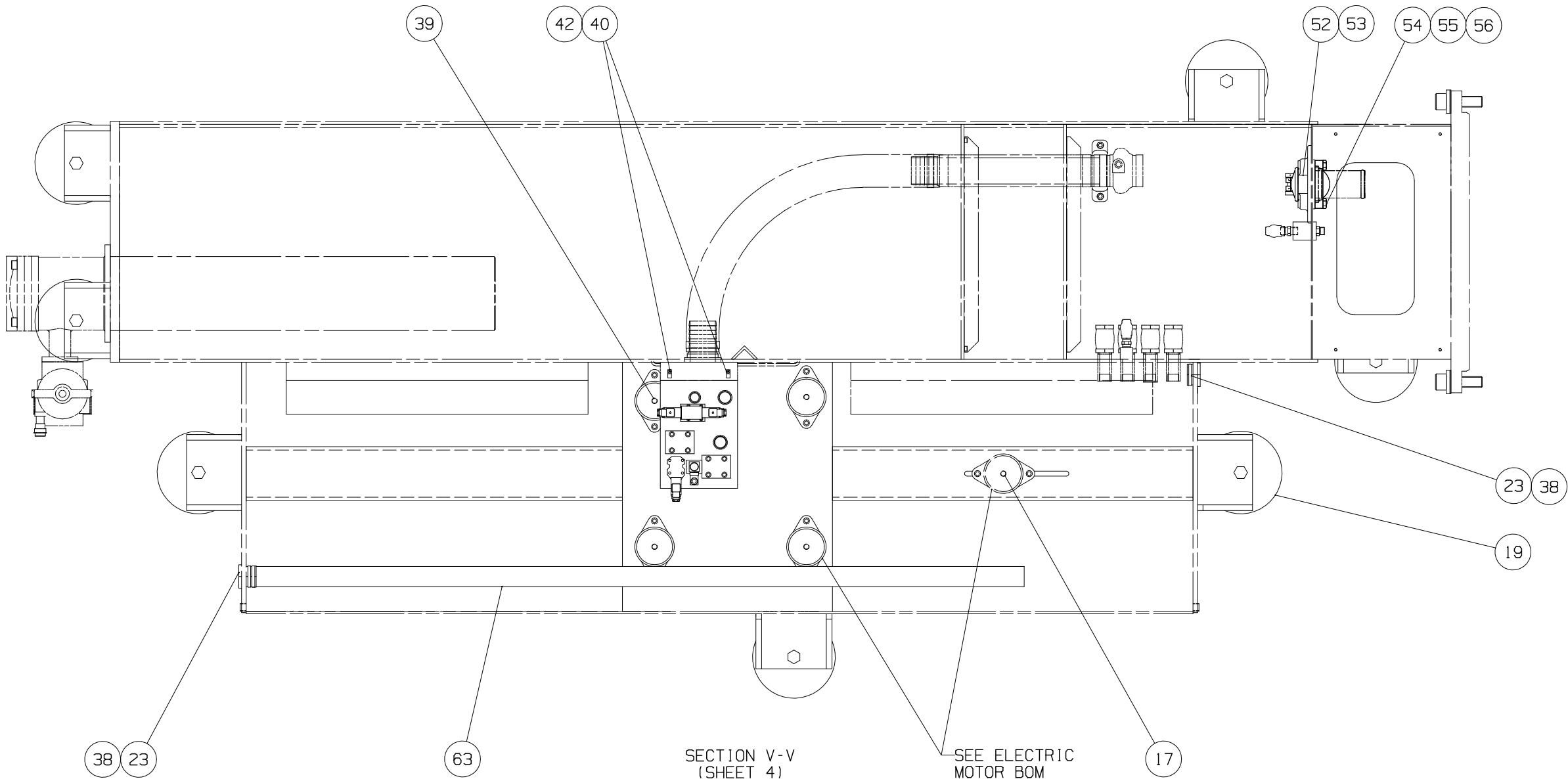
|                               |   |
|-------------------------------|---|
| WEIGHT . kg                   |   |
| TORQUE TO HUSKY SPECIFICATION |   |
| UNLESS OTHERWISE SPECIFIED    | FASTENERS: HGT-50<br>FITTINGS: HGT-FT<br>SET SCREWS: HGT-SS |

|   |  |   |  |   |  |                               |  |
|---|--|---|--|---|--|-------------------------------|--|
| METRIC  |  |  |  | <i>HUSKY</i>                                  |  | INJECTION MOLDING SYSTEMS LTD |  |
| <p>THIS DRAWING IS THE PROPERTY OF HUSKY INJECTION MOLDING SYSTEMS LTD. ("HUSKY").</p> <p>THE INFORMATION CONTAINED IN THIS DRAWING IS CONFIDENTIAL.</p> <p>THIS DRAWING AND THE INFORMATION CONTAINED IN THIS DRAWING MAY NOT BE COPIED OR USED, IN WHOLE OR IN PART, WITHOUT THE PRIOR WRITTEN PERMISSION OF HUSKY.</p> <p>COPYRIGHT-HUSKY INJECTION MOLDING SYSTEMS LTD. ALL RIGHTS RESERVED</p> |  |   |  | TITLE   |  |                               |  |
|   |  |   |  | INJECTION BASE ASSEMBLY<br>G-PET P2 AND INDEX |  |                               |  |
|   |  |   |  | SCALE    NTS                                  |  | SIZE                          |  |
| SHEET    4 OF 5   |  | A3  |  | 2304587                                       |  | REV<br>0                      |  |

1

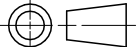
2

DRAWING 2304587  
REV 0



|     |            |                |
|-----|------------|----------------|
|     |            | DRWN:          |
|     |            | CHKD:          |
|     |            | DRWN:          |
|     |            | CHKD:          |
|     |            | DRWN:          |
|     |            | CHKD:          |
|     |            | DRWN:          |
|     |            | CHKD:          |
| 0   | 2000-08-10 | DRWN: B.SEKHON |
|     |            | CHKD:          |
| REV | DATE       | NAME           |

|                               |   |      |
|-------------------------------|---|------|
| WEIGHT                        |   | . kg |
| TORQUE TO HUSKY SPECIFICATION |   |      |
| UNLESS OTHERWISE SPECIFIED    | FASTENERS: HGT-50<br>FITTINGS: HGT-FT<br>SET SCREWS: HGT-SS |      |

|   |  |   |  |   |  |                               |  |
|---|--|---|--|---|--|-------------------------------|--|
| METRIC  |  |  |  | <i>HUSKY</i>                                  |  | INJECTION MOLDING SYSTEMS LTD |  |
| <p>THIS DRAWING IS THE PROPERTY OF HUSKY INJECTION MOLDING SYSTEMS LTD. ("HUSKY").</p> <p>THE INFORMATION CONTAINED IN THIS DRAWING IS CONFIDENTIAL.</p> <p>THIS DRAWING AND THE INFORMATION CONTAINED IN THIS DRAWING MAY NOT BE COPIED OR USED, IN WHOLE OR IN PART, WITHOUT THE PRIOR WRITTEN PERMISSION OF HUSKY.</p> <p>COPYRIGHT-HUSKY INJECTION MOLDING SYSTEMS LTD. ALL RIGHTS RESERVED</p> |  |   |  | TITLE   |  |                               |  |
|   |  |   |  | INJECTION BASE ASSEMBLY<br>G-PET P2 AND INDEX |  |                               |  |
|   |  |   |  | SCALE NTS                                     |  | SIZE                          |  |
| SHEET 5 OF 5  |  | A3  |  | 2304587                                       |  | REV 0                         |  |