

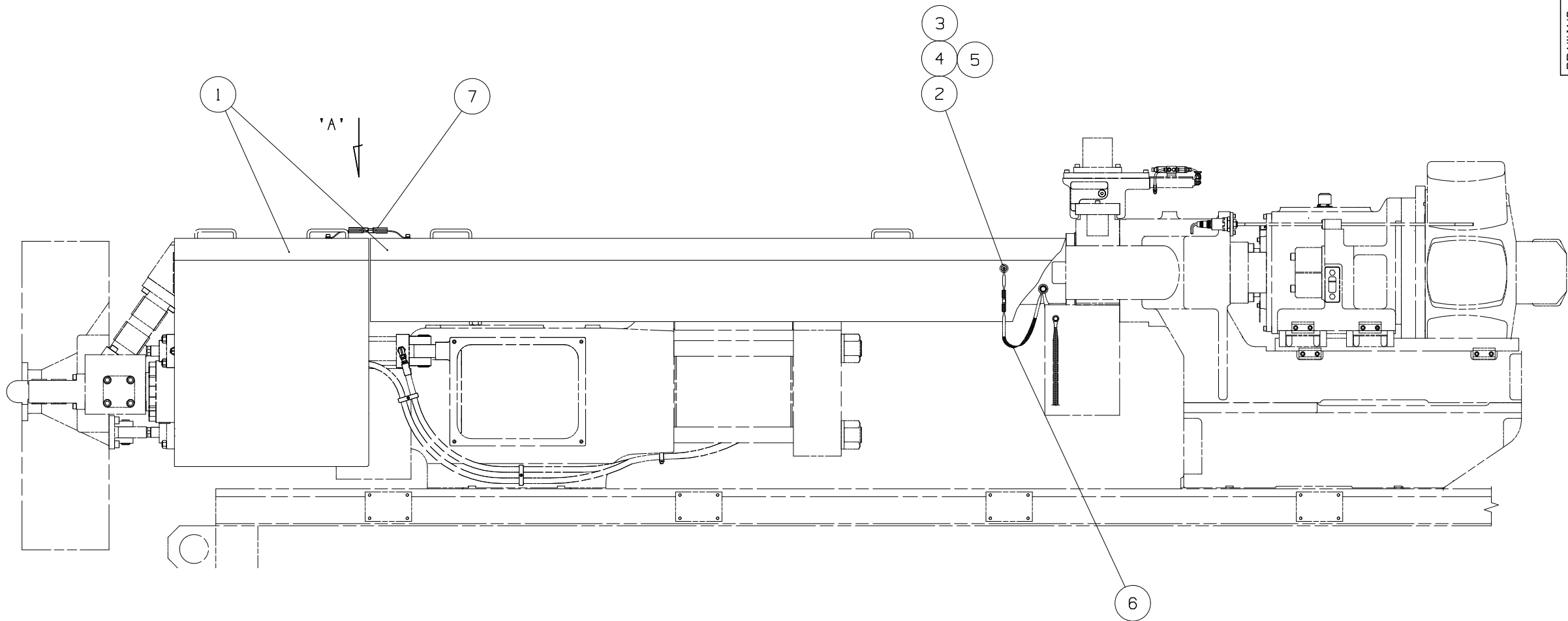
1

2

DRAWING 2242498
REV 0

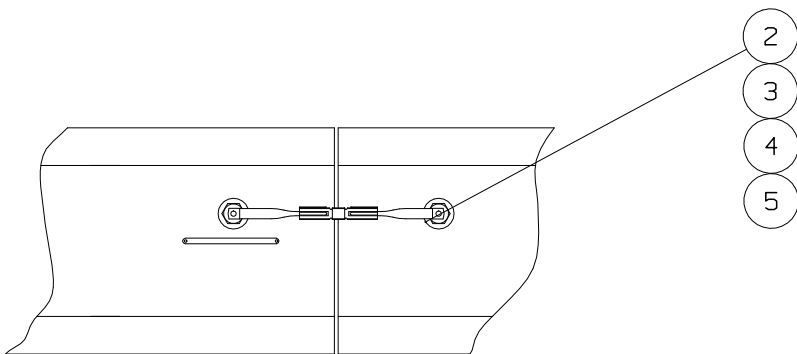
A

A



B

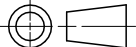
B



VIEW 'A'

| | | |
|-----|------------|------------------|
| | | DRWN: |
| | | CHKD: |
| | | DRWN: |
| | | CHKD: |
| | | DRWN: |
| | | CHKD: |
| | | DRWN: |
| | | CHKD: |
| 0 | 2000-03-07 | DRWN: E.POPP |
| | | CHKD: M.GORSCOVZ |
| REV | DATE | NAME |

| | | |
|-------------------------------|---|------|
| WEIGHT | | - kg |
| TORQUE TO HUSKY SPECIFICATION | | |
| UNLESS OTHERWISE SPECIFIED | FASTENERS: HGT-50 FITTINGS: HGT-FT SET SCREWS: HGT-SS | |

| | | | | | | | |
|---|--|---|--|--|--|-------------------------------|--|
| METRIC | |  | | <i>HUSKY</i> | | INJECTION MOLDING SYSTEMS LTD | |
| <p>THIS DRAWING IS THE PROPERTY OF HUSKY INJECTION MOLDING SYSTEMS LTD. ("HUSKY").</p> <p>THE INFORMATION CONTAINED IN THIS DRAWING IS CONFIDENTIAL.</p> <p>THIS DRAWING AND THE INFORMATION CONTAINED IN THIS DRAWING MAY NOT BE COPIED OR USED, IN WHOLE OR IN PART, WITHOUT THE PRIOR WRITTEN PERMISSION OF HUSKY.</p> <p>COPYRIGHT-HUSKY INJECTION MOLDING SYSTEMS LTD. ALL RIGHTS RESERVED</p> | | | | TITLE | | | |
| | | | | BARREL COVER ASSEMBLY G-LINE PET P2 | | | |
| | | | | SCALE NTS | | SIZE | |
| SHEET 1 OF 1 | | A3 | | 2242498 | | REV | |
| | | | | | | 0 | |