

1

2

INJECTION MANIFOLD  
SEE GENERAL ASSEMBLY  
DRAWING

SEE DETAIL 'B'

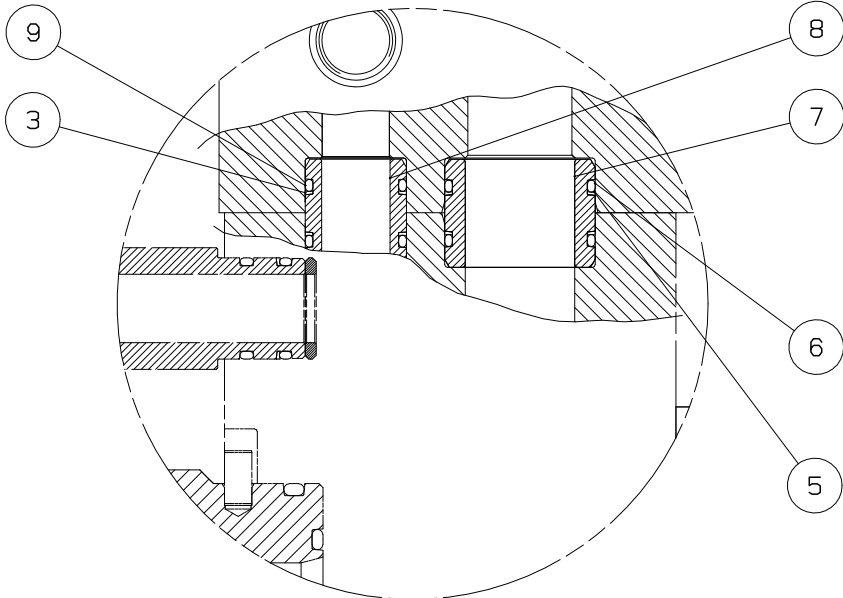
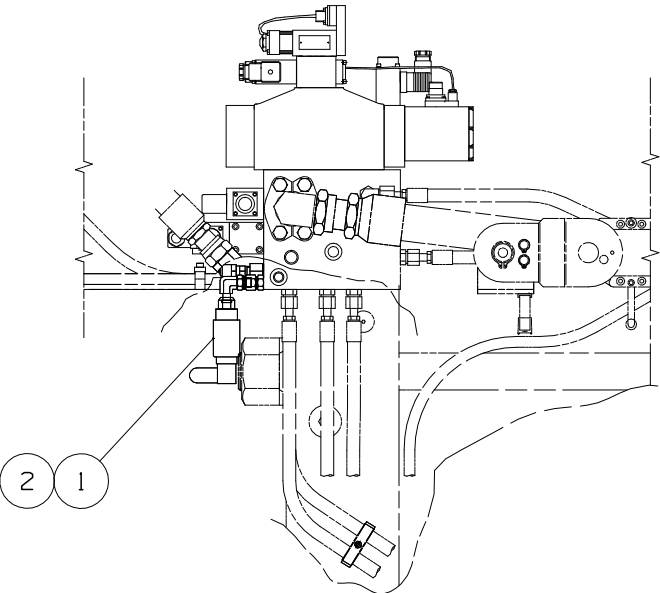
'A'

A

A

B

B



DETAIL 'B'

VIEW 'A'

- NOTE:
1. PRIOR TO ASSEMBLY ALL SEALS, GLYD RINGS, O-RINGS & WEAR RINGS SHOULD BE WE WITH HYDRAULIC OIL. ALL PARTS MUST BE CLEAN.
  2. ORIENTATION OF SEALS MUST BE AS SHOWN.
  3. FOR LUBRICATION POINTS & LUBRICANTS REFER TO MACHINE MANUAL.
  4. SCREWS REQUIRE LUBRICANT FOR ASS'Y, USE "LUBRIPLATE 3000" HPN 664682 AND "OPTIMOLY PASTE TA" HPN 644751 FOR SCREWS WITH HIGH WORKING TEMPERATURES.

		DRWN:
		CHKD:
		DRWN:
		CHKD:
		DRWN:
		CHKD:
		DRWN:
		CHKD:
0	2000-03-06	DRWN: E.POPP
		CHKD: M.GORSCOVZ
REV	DATE	NAME

WEIGHT		- kg
TORQUE TO HUSKY SPECIFICATION		
UNLESS OTHERWISE SPECIFIED	FASTENERS: HGT-50 FITTINGS: HGT-FT SET SCREWS: HGT-SS	

METRIC				INJECTION MOLDING SYSTEMS LTD	
THIS DRAWING IS THE PROPERTY OF HUSKY INJECTION MOLDING SYSTEMS LTD. ("HUSKY").		THE INFORMATION CONTAINED IN THIS DRAWING IS CONFIDENTIAL.		THIS DRAWING AND THE INFORMATION CONTAINED IN THIS DRAWING MAY NOT BE COPIED OR USED, IN WHOLE OR IN PART, WITHOUT THE PRIOR WRITTEN PERMISSION OF HUSKY.	
COPYRIGHT-HUSKY INJECTION MOLDING SYSTEMS LTD. ALL RIGHTS RESERVED		TITLE		INJECTION MANIFOLD MOUNTING ASSEMBLY G-LINE PET P2	
SCALE	NTS	SIZE	DRAWING	REV	
SHEET 1 OF 1		A3	2241910	0	

DRAWING 2241910 REV 0