

1

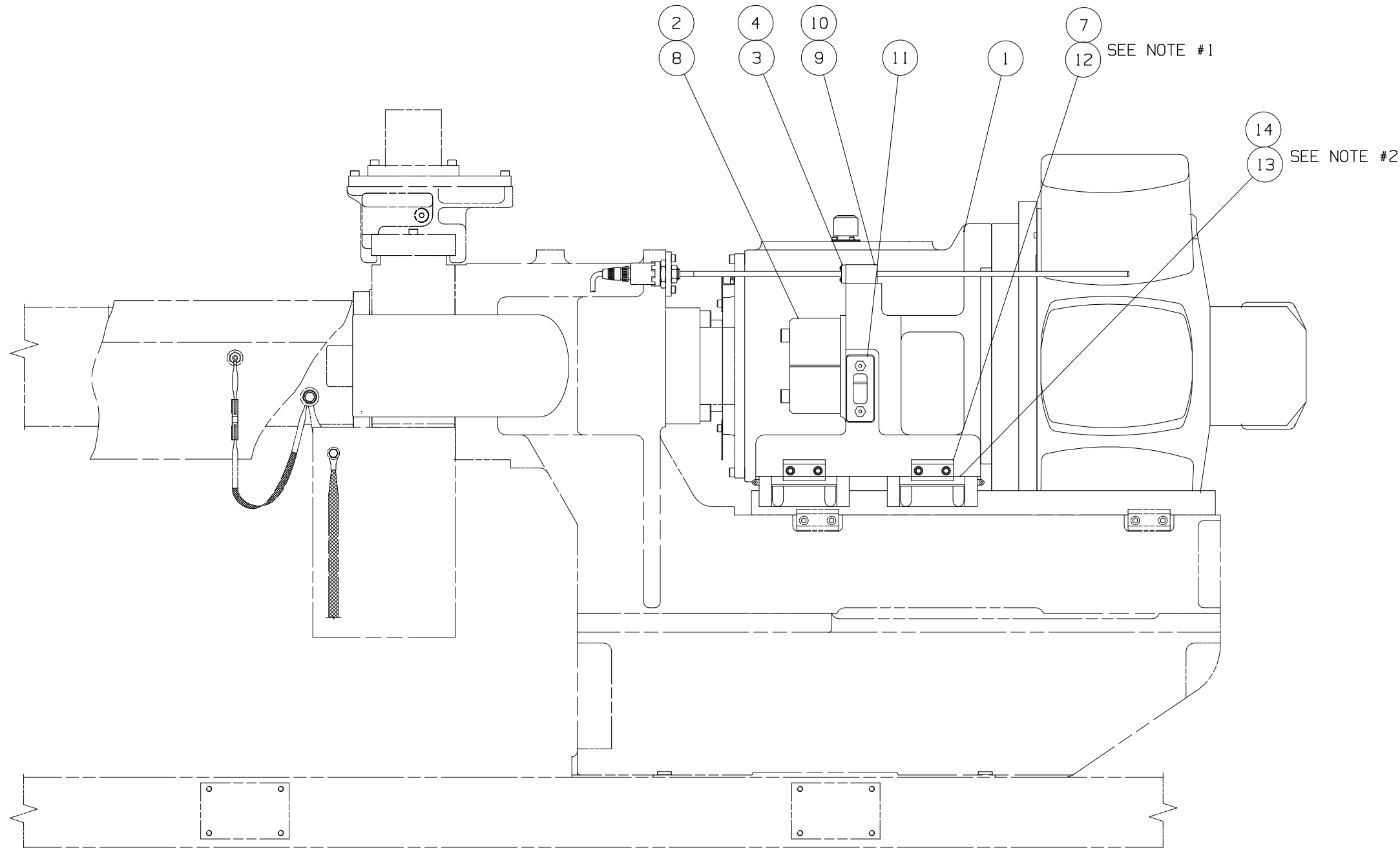
2

A

A

B

B

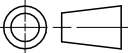


DRAWING 2237774
REV 0

- NOTE:
1. WHEN INSTALLING LINEAR BEARING SLIDES MAKE SURE THAT:
 - RAIL AND SLIDES HAVE SAME SERIAL NUMBER
 - ARROW MARKS ON SLIDES ARE FACING EACH OTHER
 - GROOVE MARKS ON THE RAIL AND SLIDE ARE FACING SIDE MOUNTING SURFACES ON THE HOUSING
 2. BEFORE TIGHTENING SCREWS ON SIDE PLATES MAKE SURE MOTOR HOUSING SLIDES SMOOTHLY ON RAILS
 3. PRIOR TO ASSEMBLY ALL SEALS, GLYD RINGS O-RINGS & WEAR RINGS SHOULD BE CLEAN WITH HYDRAULIC OIL. ALL PARTS MUST BE CLEAN.
 4. ORIENTATION OF SEALS MUST BE AS SHOWN
 5. FOR OIL LEVEL INSTRUCTIONS REFER TO MACHINE MANUAL
 6. FOR LUBRICATION POINTS & LUBRICANTS REFER TO MACHINE MANUAL
 7. SCREWS REQUIRE LUBRICANT FOR ASS'Y, USE "LUBRIPLATE 3000" HPN 664682 AND "OPTIMOLY PASTE TA" HPN 644751 FOR SCREWS WITH HIGH WORKING TEMPERATURES.

		DRWN:
		CHKD:
		DRWN:
		CHKD:
		DRWN:
		CHKD:
		DRWN:
		CHKD:
0	2000-02-25	DRWN: E.POPP
		CHKD: M.GORSCOVZ
REV	DATE	NAME

WEIGHT - kg	
TORQUE TO HUSKY SPECIFICATION	
UNLESS OTHERWISE SPECIFIED	FASTENERS: HGT-50 FITTINGS: HGT-FT SET SCREWS: HGT-SS

METRIC				<i>HUSKY</i>		INJECTION MOLDING SYSTEMS LTD	
<p>THIS DRAWING IS THE PROPERTY OF HUSKY INJECTION MOLDING SYSTEMS LTD. ("HUSKY").</p> <p>THE INFORMATION CONTAINED IN THIS DRAWING IS CONFIDENTIAL.</p> <p>THIS DRAWING AND THE INFORMATION CONTAINED IN THIS DRAWING MAY NOT BE COPIED OR USED, IN WHOLE OR IN PART, WITHOUT THE PRIOR WRITTEN PERMISSION OF HUSKY.</p> <p>COPYRIGHT-HUSKY INJECTION MOLDING SYSTEMS LTD. ALL RIGHTS RESERVED</p>				TITLE			
				MOTOR HOUSING SUB-ASSEMBLY G-LINE PET P2			
				SCALE		NTS	SIZE
SHEET		1 OF 2		A3	2237774	0	

1

2

A

A

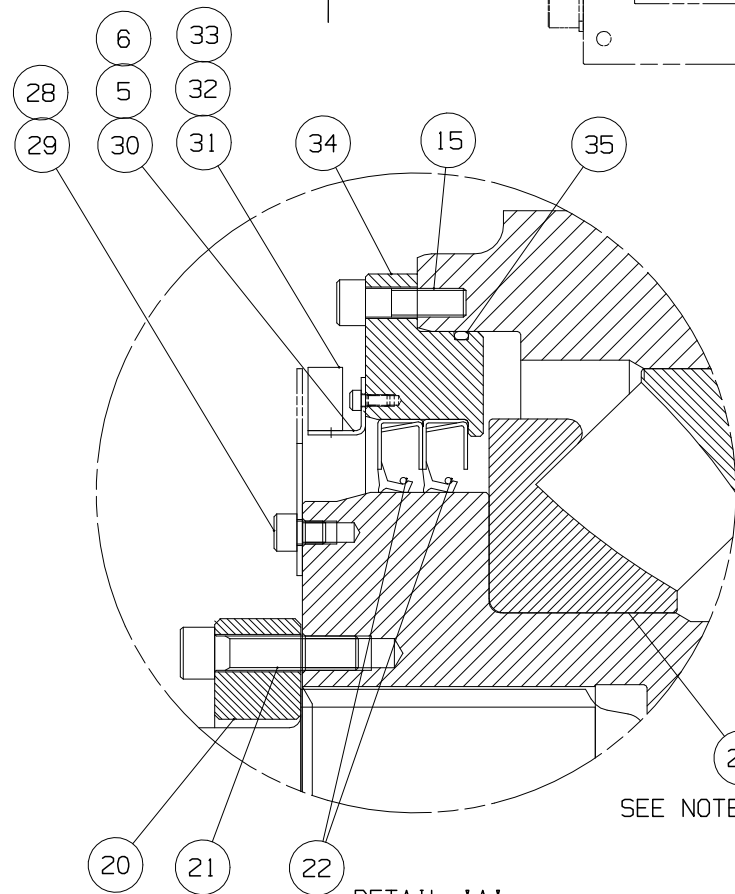
B

B

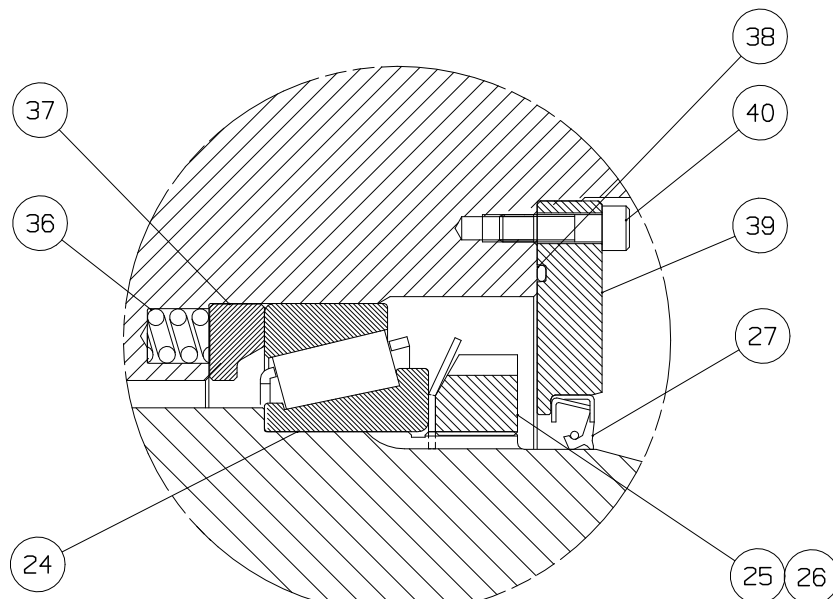
SEE DETAIL 'A'

SEE DETAIL 'B' SEE DETAIL 'C'

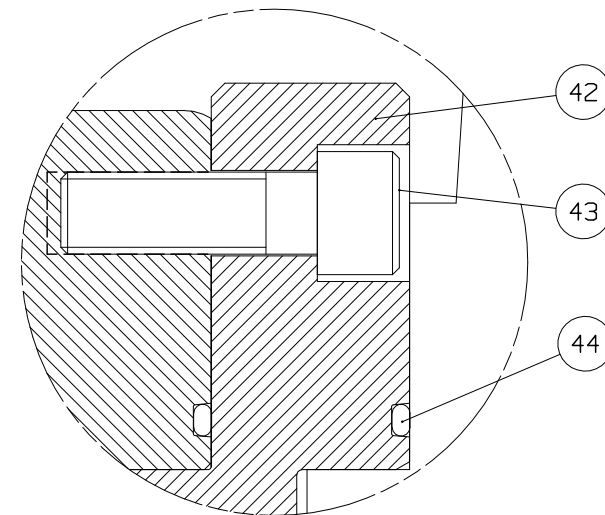
DRAWING 2237774 REV 0



SEE NOTES 8 & 9



SEE NOTES 8 & 9



DETAIL 'C'
USE FOR MR0900
OR BIGGER MOTORS

		DRWN:
		CHKD:
		DRWN:
		CHKD:
		DRWN:
		CHKD:
0	2000-02-25	DRWN: E.POPP
		CHKD: M.GORSCOVZ
REV	DATE	NAME

- NOTE:
- INNER RACES OF THE BEARINGS TO BE HEATED PRIOR TO INSTALLATION. USE MELT CRAYON, THERMOMELT RANGE +93° C (200° F) ACCURATE WITHIN ±1%.
 - USE TOOLING PLATE TO COMPRESS SPRINGS DURING INSTALLATION OF BEARINGS.

WEIGHT - kg

TORQUE TO HUSKY SPECIFICATION

UNLESS OTHERWISE SPECIFIED

FASTENERS: HGT-50
FITTINGS: HGT-FT
SET SCREWS: HGT-SS

METRIC

THIS DRAWING IS THE PROPERTY OF HUSKY INJECTION MOLDING SYSTEMS LTD. ("HUSKY").

THE INFORMATION CONTAINED IN THIS DRAWING IS CONFIDENTIAL.

THIS DRAWING AND THE INFORMATION CONTAINED IN THIS DRAWING MAY NOT BE COPIED OR USED, IN WHOLE OR IN PART, WITHOUT THE PRIOR WRITTEN PERMISSION OF HUSKY.

COPYRIGHT-HUSKY INJECTION MOLDING SYSTEMS LTD. ALL RIGHTS RESERVED

HUSKY

INJECTION MOLDING SYSTEMS LTD

TITLE
MOTOR HOUSING SUB-ASSEMBLY
G-LINE PET P2

SCALE	NTS	SIZE	DRAWING	REV
SHEET 2 OF 2		A3	2237774	0