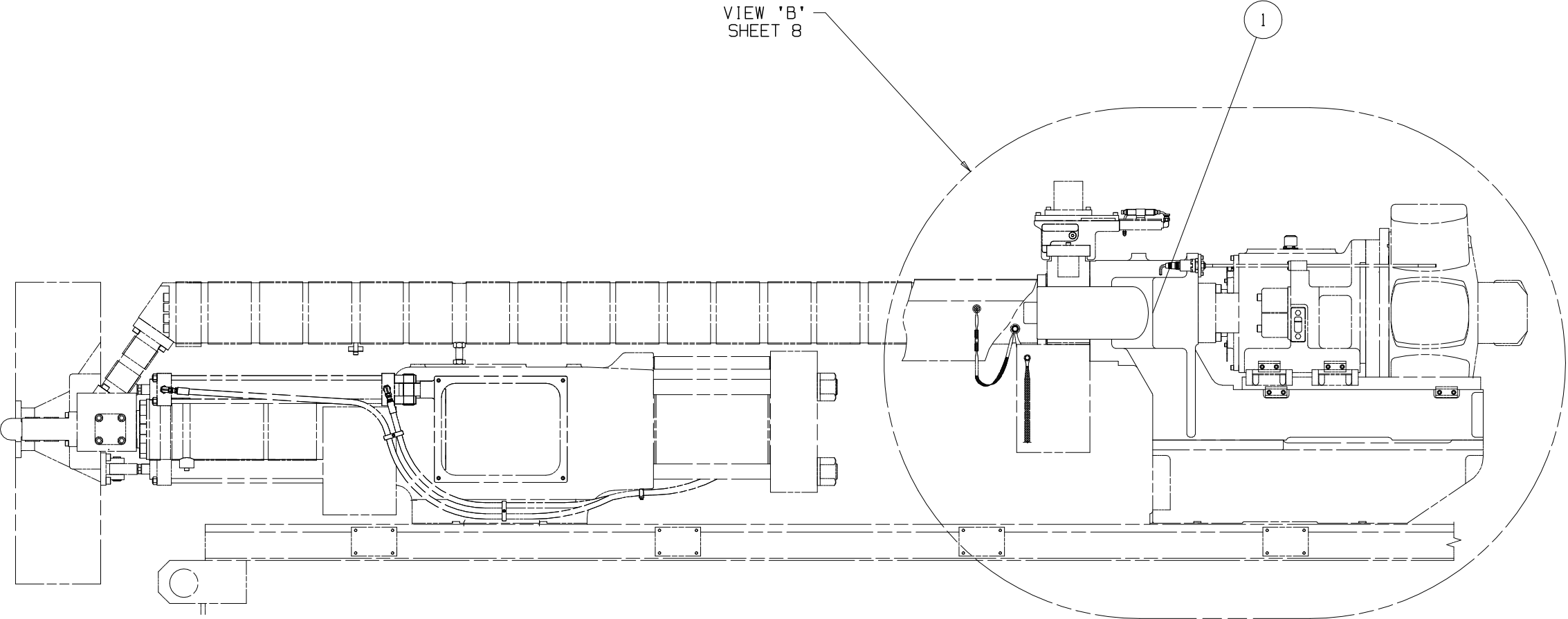


1

2

DRAWING 2237329  
REV 0

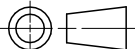
VIEW 'B'  
SHEET 8



- NOTE:
- 1. PRIOR TO ASSEMBLY ALL SEALS, GLYD RINGS, O-RINGS & WEAR RINGS SHOULD BE WET WITH HYDRAULIC OIL. ALL PARTS MUST BE CLEAN.
  - 2. ORIENTATION OF SEALS MUST BE AS SHOWN.
  - 3. FOR OIL LEVEL INSTRUCTIONS REFER TO MACHINE MANUAL.
  - 4. FOR LUBRICATION POINTS & LUBRICANTS REFER TO MACHINE MANUAL.
  - 5. SCREWS REQUIRE LUBRICANT FOR ASS'Y, USE "LUBRIPLATE 3000" HPN 664682 AND "OPTIMOLY PASTE TA" HPN 664751 FOR SCREWS WITH HIGH WORKING TEMPERATURES.
  - 6. SOME GEROMETRY IS REMOVED FOR CLRITY OF THE DRAWING.

		DRWN:
		CHKD:
		DRWN:
		CHKD:
		DRWN:
		CHKD:
		DRWN:
		CHKD:
0	2000-02-24	DRWN: E.POPP
		CHKD: M.GORSCOVZ
REV	DATE	NAME

WEIGHT		- kg
TORQUE TO HUSKY SPECIFICATION		
UNLESS OTHERWISE SPECIFIED	FASTENERS:	HGT-50
	FITTINGS:	HGT-FT
	SET SCREWS:	HGT-SS

METRIC				<i>HUSKY</i>		INJECTION MOLDING SYSTEMS LTD			
THIS DRAWING IS THE PROPERTY OF HUSKY INJECTION MOLDING SYSTEMS LTD. ("HUSKY").  THE INFORMATION CONTAINED IN THIS DRAWING IS CONFIDENTIAL.  THIS DRAWING AND THE INFORMATION CONTAINED IN THIS DRAWING MAY NOT BE COPIED OR USED, IN WHOLE OR IN PART, WITHOUT THE PRIOR WRITTEN PERMISSION OF HUSKY.  COPYRIGHT-HUSKY INJECTION MOLDING SYSTEMS LTD. ALL RIGHTS RESERVED				TITLE					
				DRIVE SUB-ASSEMBLY G-LINE PET P2					
SCALE		NTS		SIZE		DRAWING		REV	
SHEET		1 OF 3		A3		2237329		0	

1

2

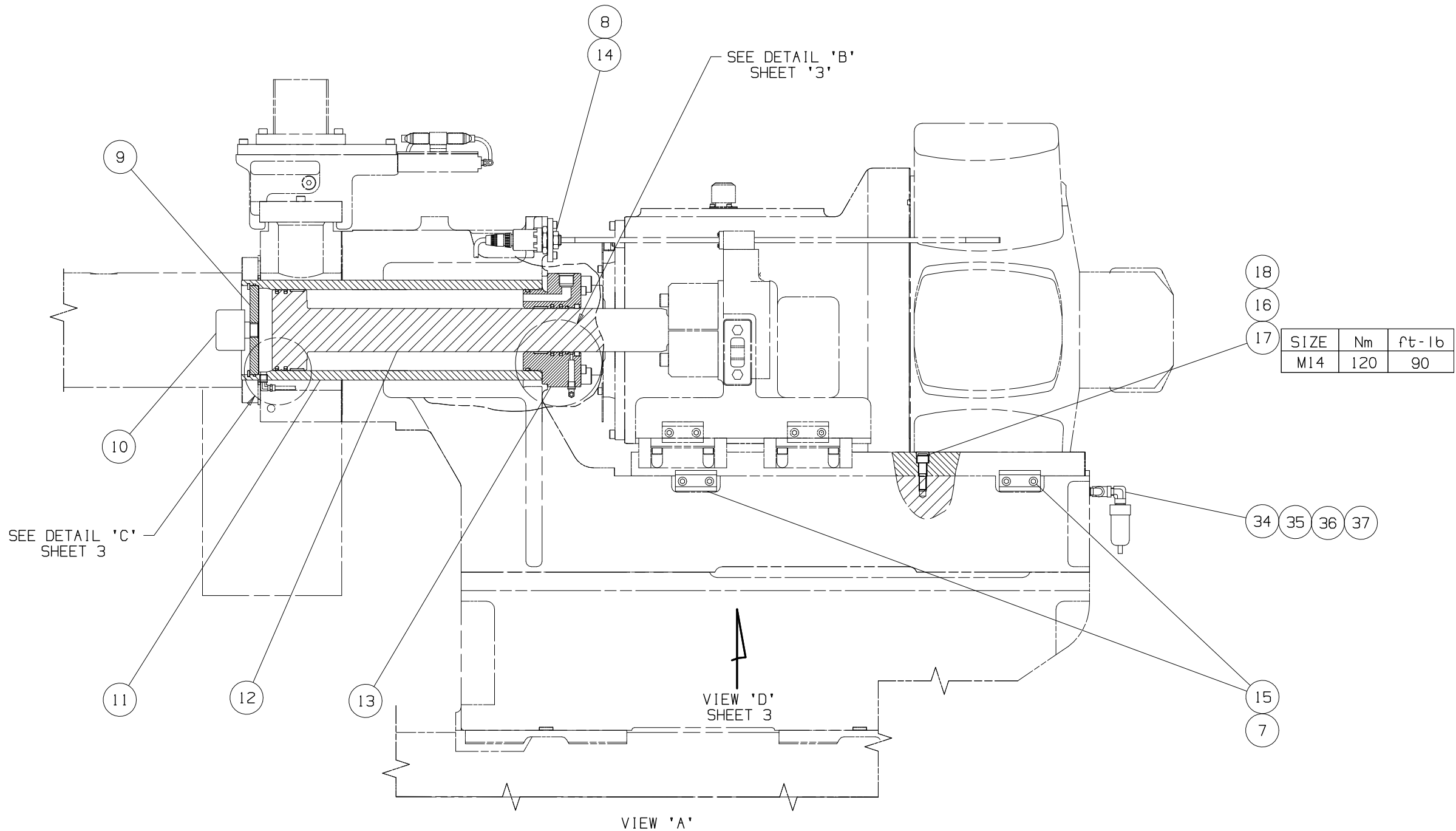
DRAWING 2237329 REV 0

A

A

B

B



		DRWN:
		CHKD:
		DRWN:
		CHKD:
		DRWN:
		CHKD:
		DRWN:
		CHKD:
0	2000-02-24	DRWN: E.POPP
		CHKD: M.GORSCOVZ
REV	DATE	NAME

WEIGHT		- kg
TORQUE TO HUSKY SPECIFICATION		
UNLESS OTHERWISE SPECIFIED	FASTENERS:	HGT-50
	FITTINGS:	HGT-FT
	SET SCREWS:	HGT-SS

METRIC				INJECTION MOLDING SYSTEMS LTD	
THIS DRAWING IS THE PROPERTY OF HUSKY INJECTION MOLDING SYSTEMS LTD. ("HUSKY").		THE INFORMATION CONTAINED IN THIS DRAWING IS CONFIDENTIAL.		THIS DRAWING AND THE INFORMATION CONTAINED IN THIS DRAWING MAY NOT BE COPIED OR USED, IN WHOLE OR IN PART, WITHOUT THE PRIOR WRITTEN PERMISSION OF HUSKY.	
COPYRIGHT-HUSKY INJECTION MOLDING SYSTEMS LTD. ALL RIGHTS RESERVED		TITLE		DRIVE SUB-ASSEMBLY G-LINE PET P2	
SCALE	NTS	SIZE	DRAWING	REV	
SHEET 2 OF 3		A3	2237329	0	

1

2

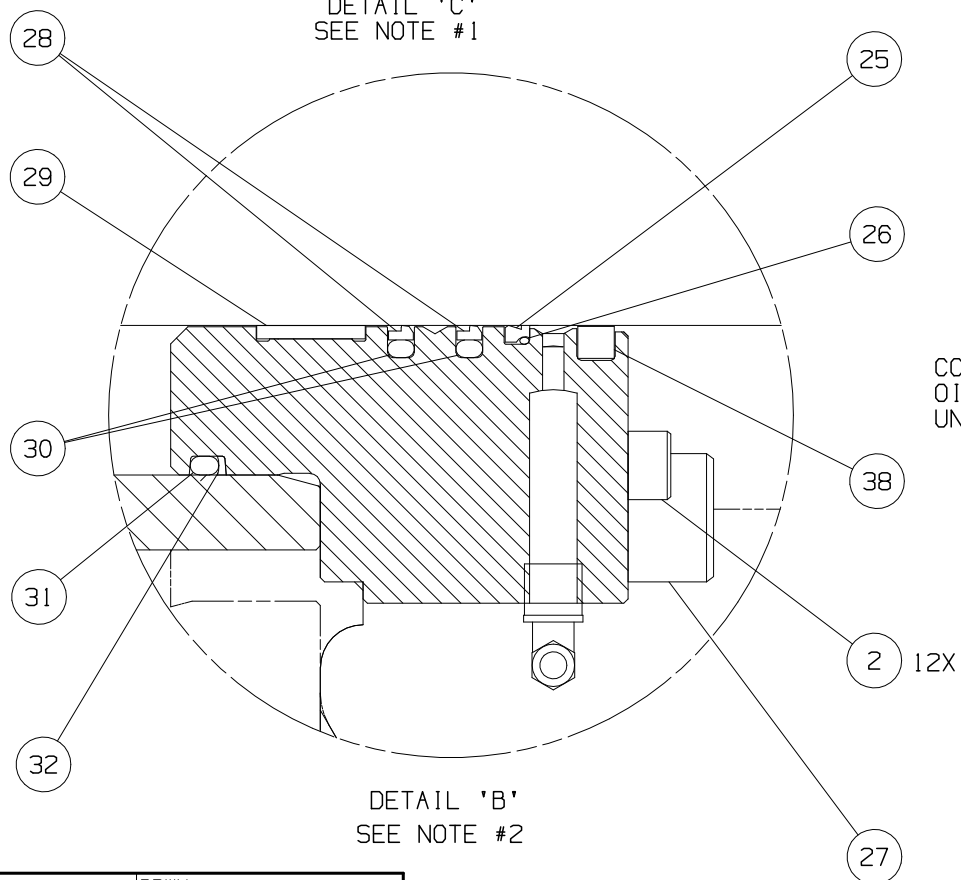
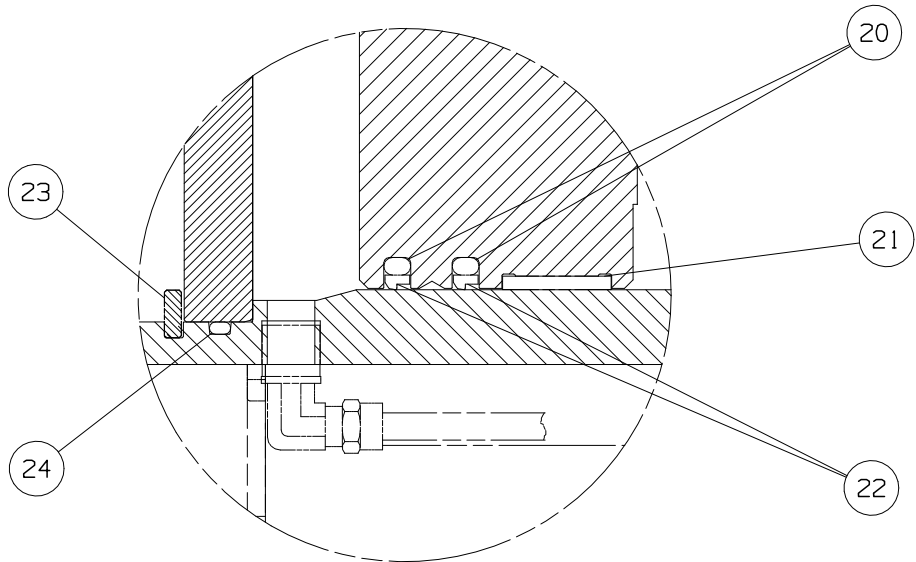
DRAWING 2237329  
REV 0

A

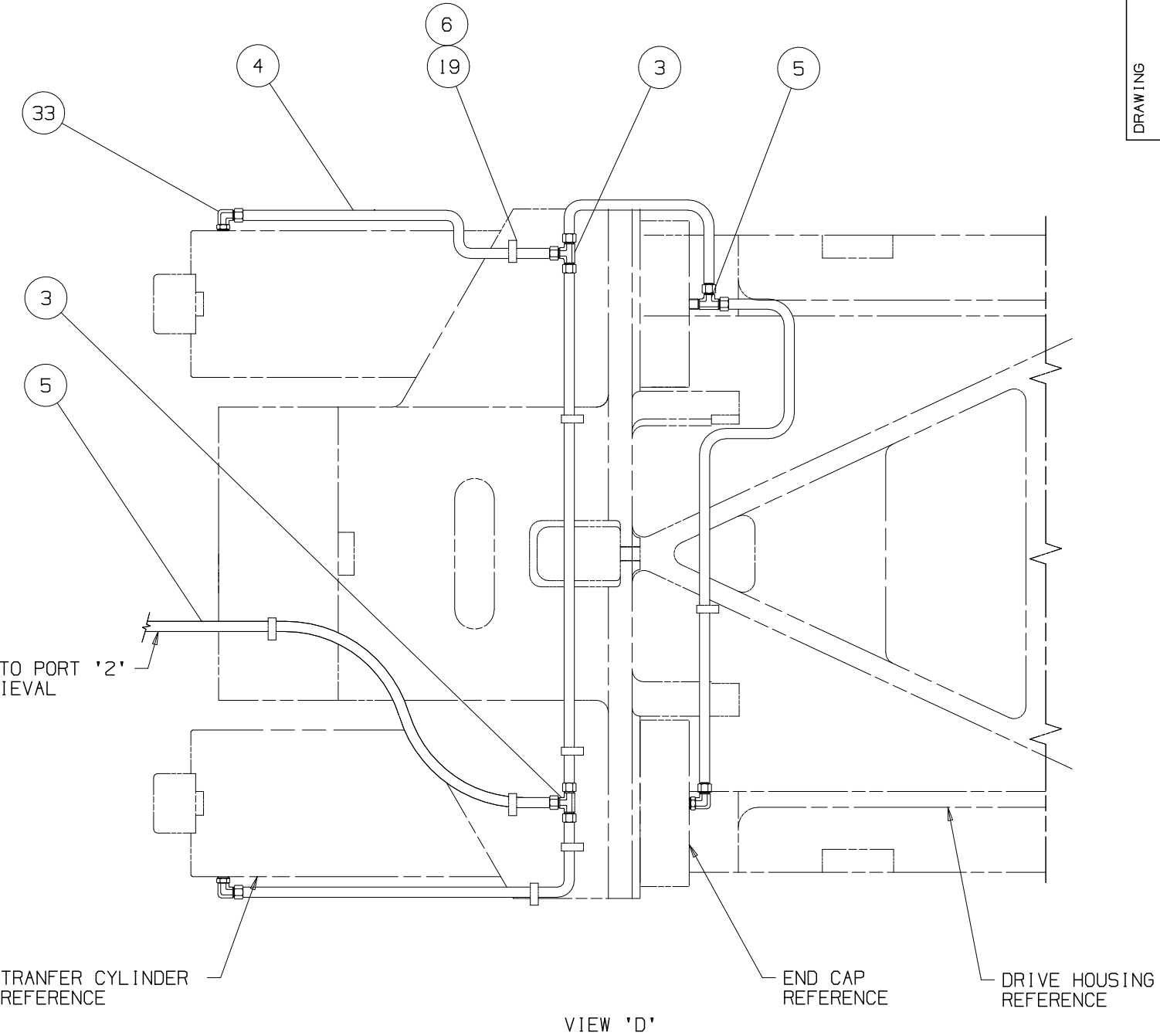
A

B

B



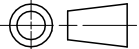
CONNECT TO PORT '2'  
OIL RETRIEVAL  
UNIT



		DRWN:
		CHKD:
		DRWN:
		CHKD:
		DRWN:
		CHKD:
		DRWN:
		CHKD:
0	2000-02-24	DRWN: E.POPP
		CHKD: M.GORSCOVZ
REV	DATE	NAME

NOTE:  
7. MAX 15° ELBOW ROTATION FROM CENTER LINE OF CYLINDER ALLOWED.  
8. LUBRICATE CONTACT SURFACES OF CYLINDER SLEEVE AND PISTON WITH HYDRAULIC OIL

WEIGHT		- kg
TORQUE TO HUSKY SPECIFICATION		
UNLESS OTHERWISE SPECIFIED	FASTENERS:	HGT-50
	FITTINGS:	HGT-FT
	SET SCREWS:	HGT-SS

METRIC				<h1>HUSKY</h1>		INJECTION MOLDING SYSTEMS LTD			
<p>THIS DRAWING IS THE PROPERTY OF HUSKY INJECTION MOLDING SYSTEMS LTD. ("HUSKY").</p> <p>THE INFORMATION CONTAINED IN THIS DRAWING IS CONFIDENTIAL.</p> <p>THIS DRAWING AND THE INFORMATION CONTAINED IN THIS DRAWING MAY NOT BE COPIED OR USED, IN WHOLE OR IN PART, WITHOUT THE PRIOR WRITTEN PERMISSION OF HUSKY.</p> <p>COPYRIGHT-HUSKY INJECTION MOLDING SYSTEMS LTD. ALL RIGHTS RESERVED</p>				TITLE					
				DRIVE SUB-ASSEMBLY G-LINE PET P2					
SCALE		NTS		SIZE		DRAWING		REV	
SHEET		3 OF 3		A3		2237329		0	