

1

2

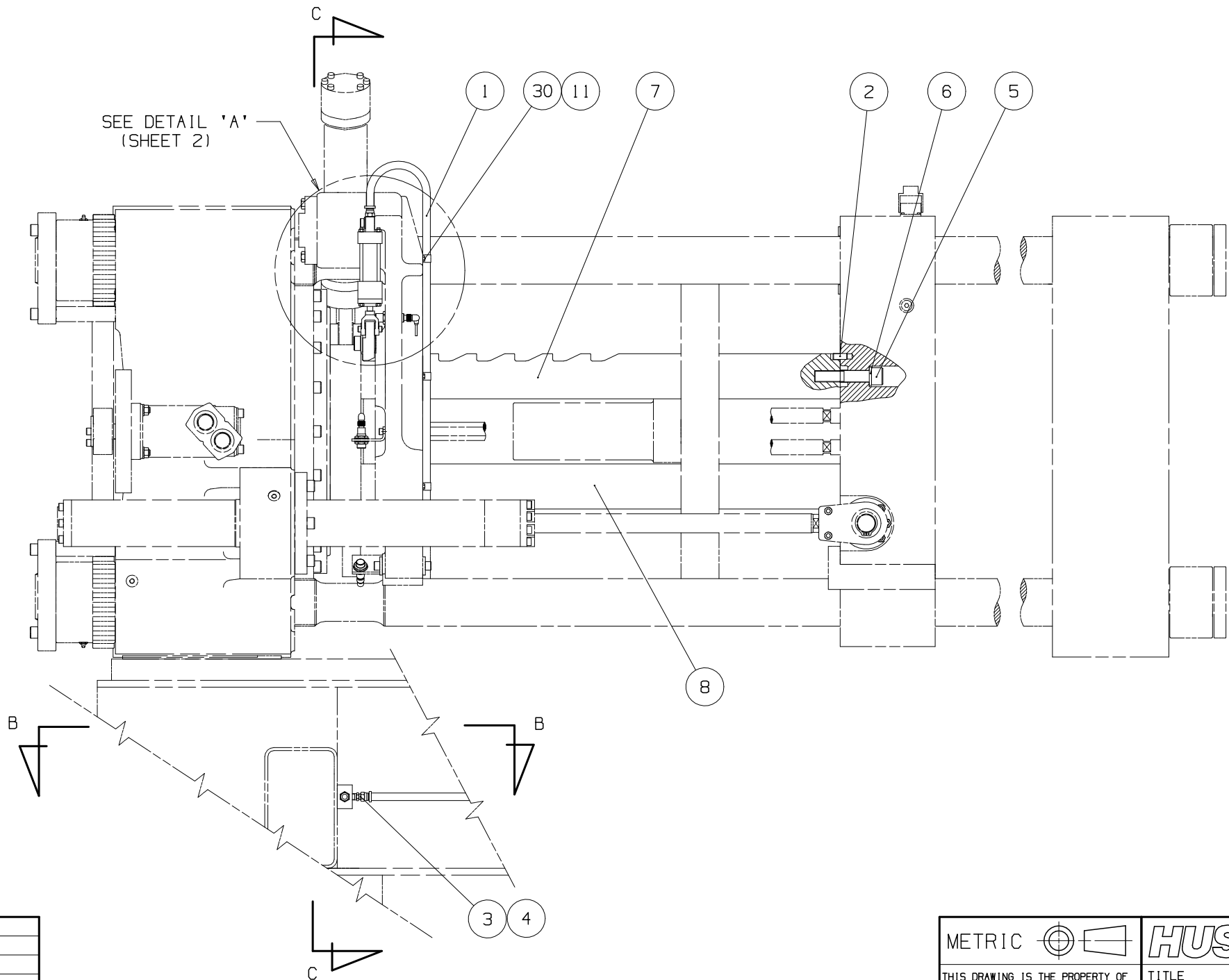
DRAWING 2229062
REV 0

A

A

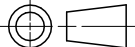
B

B



		DRWN:
		CHKD:
		DRWN:
		CHKD:
		DRWN:
		CHKD:
0	2000-02-01	DRWN: E.POPP
		CHKD: M.GORSCOVZ
REV	DATE	NAME

WEIGHT - kg	
TORQUE TO HUSKY SPECIFICATION	
UNLESS OTHERWISE SPECIFIED	FASTENERS: HGT-50 FITTINGS: HGT-FT SET SCREWS: HGT-SS

METRIC				<i>HUSKY</i>		INJECTION MOLDING SYSTEMS LTD	
THIS DRAWING IS THE PROPERTY OF HUSKY INJECTION MOLDING SYSTEMS LTD. ("HUSKY"). THE INFORMATION CONTAINED IN THIS DRAWING IS CONFIDENTIAL. THIS DRAWING AND THE INFORMATION CONTAINED IN THIS DRAWING MAY NOT BE COPIED OR USED, IN WHOLE OR IN PART, WITHOUT THE PRIOR WRITTEN PERMISSION OF HUSKY. COPYRIGHT-HUSKY INJECTION MOLDING SYSTEMS LTD. ALL RIGHTS RESERVED				TITLE CLAMP COLUMN ASSEMBLY WITH DROP BAR G-LINE PET P2			
				SCALE	NTS	SIZE	DRAWING
SHEET		1 OF 2		A3	2229062	0	

1

2

1

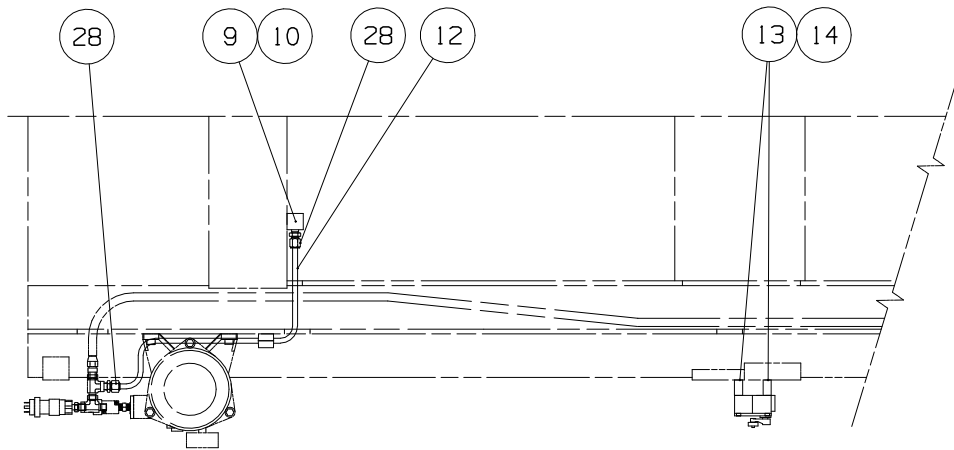
2

A

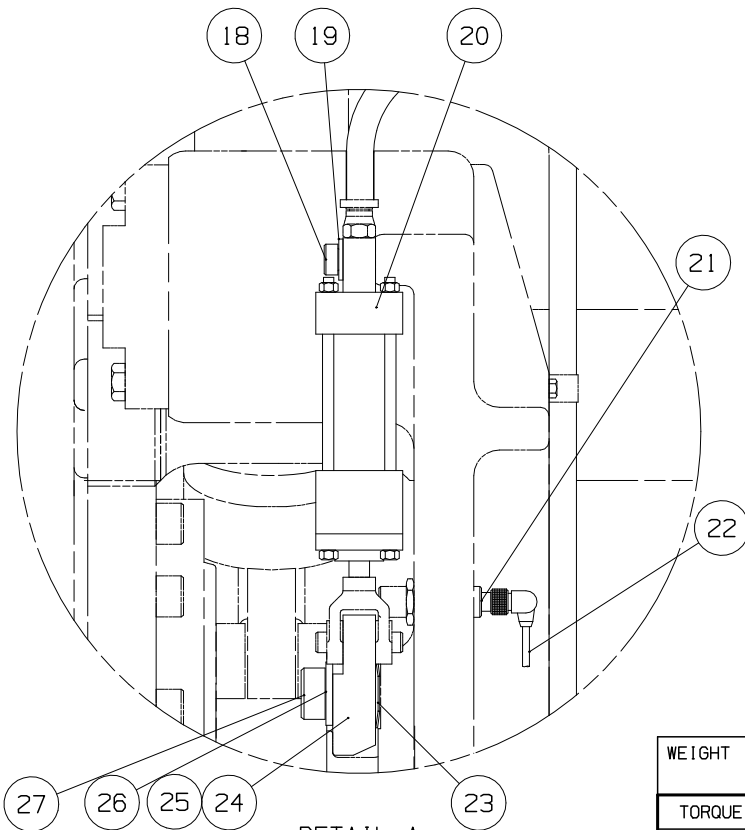
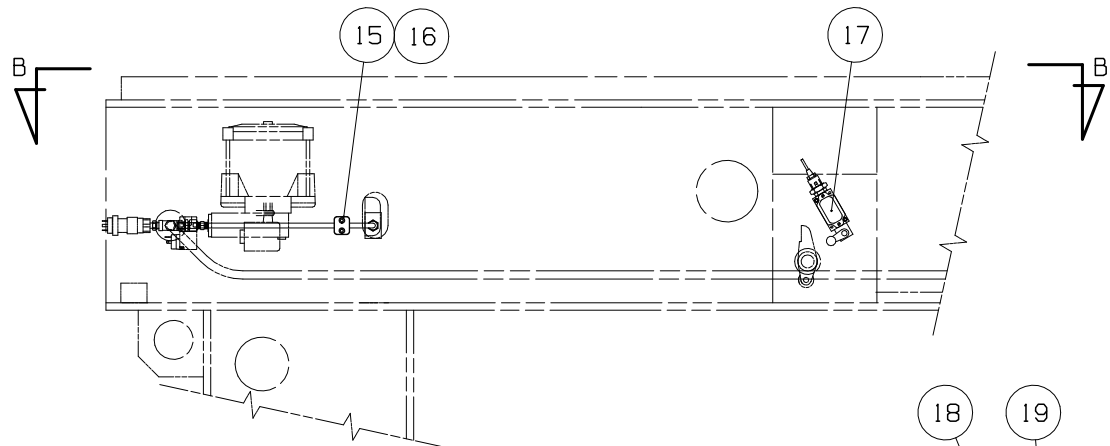
A

B

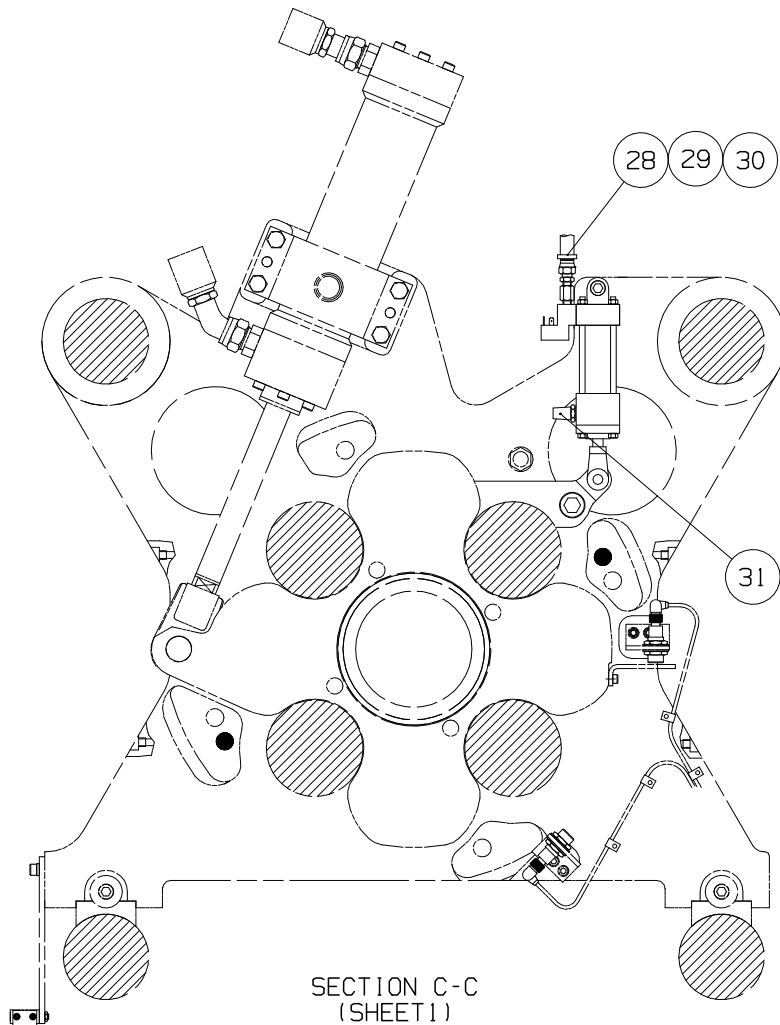
B



SECTION B-B
(SHEET 1)



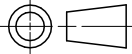
DETAIL A
(SHEET 1)



SECTION C-C
(SHEET 1)

DRAWING 2229062
REV 0

		DRWN:
		CHKD:
		DRWN:
		CHKD:
		DRWN:
		CHKD:
		DRWN:
		CHKD:
0	2000-02-01	DRWN: E.POPP
		CHKD: M.GORSCOVZ
REV	DATE	NAME

METRIC 		HUSKY INJECTION MOLDING SYSTEMS LTD	
THIS DRAWING IS THE PROPERTY OF HUSKY INJECTION MOLDING SYSTEMS LTD. ("HUSKY"). THE INFORMATION CONTAINED IN THIS DRAWING IS CONFIDENTIAL. THIS DRAWING AND THE INFORMATION CONTAINED IN THIS DRAWING MAY NOT BE COPIED OR USED, IN WHOLE OR IN PART, WITHOUT THE PRIOR WRITTEN PERMISSION OF HUSKY.		TITLE CLAMP COLUMN ASSEMBLY WITH DROP BAR G-LINE PET P2	
WEIGHT - kg	TORQUE TO HUSKY SPECIFICATION	SCALE NTS	REV
UNLESS OTHERWISE SPECIFIED	FASTENERS: HGT-50 FITTINGS: HGT-FT SET SCREWS: HGT-SS	SIZE A3	DRAWING 2229062
COPYRIGHT-HUSKY INJECTION MOLDING SYSTEMS LTD. ALL RIGHTS RESERVED		SHEET 2 OF 2	0