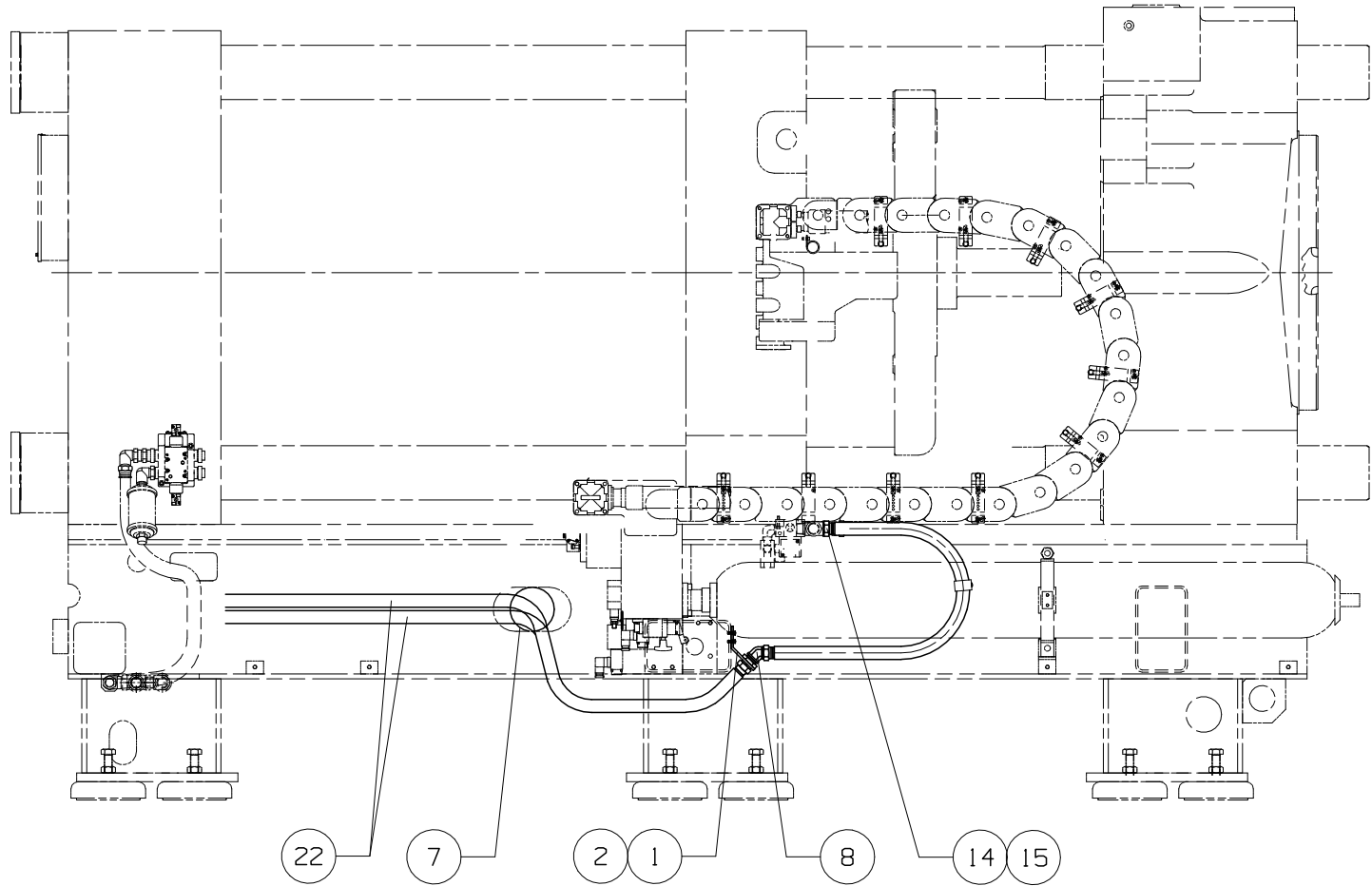
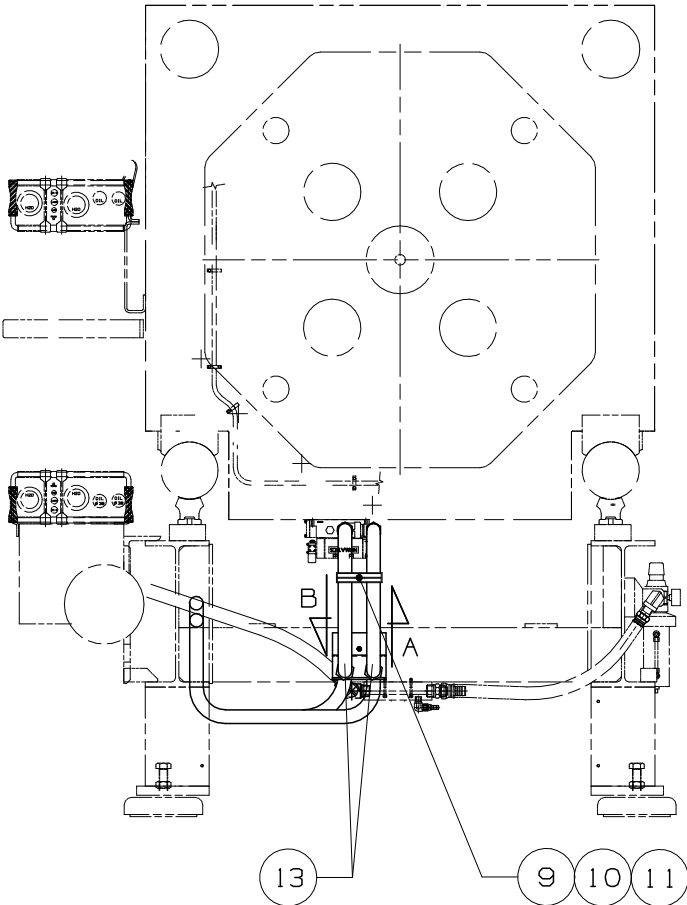


A

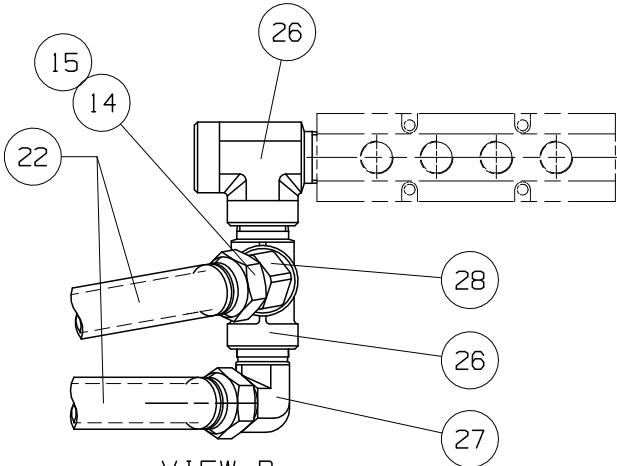


NON-OPERATOR SIDE

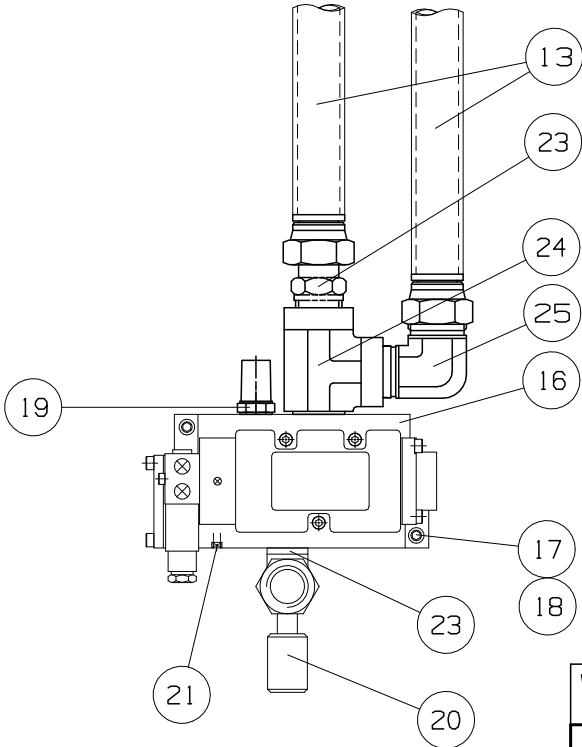


CLAMP END

A



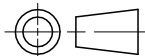
VIEW B



VIEW A

|     |          |                |     |
|-----|----------|----------------|-----|
|     |          | DRWN:          |     |
|     |          | CHKD:          |     |
|     |          | DRWN:          |     |
|     |          | CHKD:          |     |
|     |          | DRWN:          |     |
|     |          | CHKD:          |     |
|     |          | DRWN:          |     |
|     |          | CHKD:          |     |
| 0   | 99/07/28 | DRWN: B.SEKHON |     |
|     |          | CHKD: A.ROSADA |     |
| REV | DATE     | NAME           | ECO |

|                               |   |        |
|-------------------------------|---|--------|
| WEIGHT                        |   | N/A kg |
| TORQUE TO HUSKY SPECIFICATION |   |        |
| UNLESS OTHERWISE SPECIFIED    | FASTENERS: HGT-80<br>FITTINGS: HGT-FT<br>SET SCREWS: HGT-SS |        |

|   |  |  |         |                 |       |
|---|--|--|---------|-----------------|-------|
| METRIC   |  | <i>HUSKY</i> INJECTION MOLDING SYSTEMS LTD       |         |                 |       |
| THIS DRAWING IS THE PROPERTY OF<br>PARTS INJECTION MOLDING SYSTEMS<br>LTD. ("HUSKY").   |  | TITLE  |         |                 |       |
| THE INFORMATION CONTAINED<br>IN THIS DRAWING IS CONFIDENTIAL.   |  | PARTS BLOW OFF<br>ASSEMBLY<br>GL300 PET SPEED-UP |         |                 |       |
| THIS DRAWING AND THE INFORMATION<br>CONTAINED IN THIS DRAWING MAY<br>NOT BE COPIED OR USED, IN WHOLE<br>OR IN PART, WITHOUT THE PRIOR<br>WRITTEN PERMISSION OF HUSKY. |  |  |         |                 |       |
| COPYRIGHT-HUSKY INJECTION MOLDING<br>SYSTEMS LTD. ALL RIGHTS RESERVED   |  | SCALE 1 : 1                                      | SIZE A3 | DRAWING 2163631 | REV 0 |
|   |  | SHEET 1 OF 1                                     |         |                 |       |